

WELCOME TO THE READING HQ!

We're glad you've partnered with us in our mission of making better readers. Our programs are designed to develop foundational skills, critical thinking, applicable comprehension, and most of all, a love for reading. Through the resources in this book and on our digital platform, we hope to provide you with the tools you need to accomplish your individual goals for your children. Our training module gives a lot of great info to help you get started, but we're here for you every step of the way! Let us know how we can help.

Sincerely,

Lydia Callahan

Our goal is to help children become better readers, so whether you are a parent looking to help your child or a school administrator looking to implement a program, we're here for you!

Download a sample lesson at each grade level to view a daily video, a slide deck, an instructor guide, and a student activity sheet. Once you've done that, shoot us an email for more information and let us answer your questions.

At The Reading HQ, there is daily review of concepts to build automatically in a way that does not center around memorization. Our goal is to provide a child with multiple ways to access the information by giving them opportunities for auditory, visual, and kinesthetic learning on a daily basis.

Core Philosophies

- » Make learning engaging, fun, and relevant; connect it to real life
- » Children learn in different ways and at different rates; provide instruction that meets students where they are
- » Provide opportunities for successful interactions with reading immediately
- » Dual emphasis in instruction: comprehension and decoding strategies



readingHQ
BECOMING BETTER READERS

TEACHER'S EDITION

LESSON PLANS

ADVANCED



ADVANCED LESSON 15

Objectives

- Prefixes: UN, RE, MID, MIS
- Suffixes: FUL, LESS, LY
- Syllables
- Secret Code: Box

Materials

- Activity Book pp. XX
- Flashcard: #10 Common Suffixes

Essential Questions

- What are the two types of affixes?
- What is the meaning of the following prefixes and suffixes: UN, RE, MID, MIS, FUL, LESS, LY, ER, and OR?
- Does adding one of these suffixes affect the meaning of the new word? If so, how?

Daily Video

Slide Presentation Guide

Before we look at any words today, let's talk about affixes. An affix is a letter or group of letters that can be added to the beginning or the end of a word.

In the first part of our lesson, we will practice prefixes. A prefix is a letter or group of letters, an affix, that can be added to the beginning of a word.

Explain the meaning of any unfamiliar words throughout the lesson.

Slide 1: Words—(slide for introducing Prefix UN)

UN	the opposite of; not
<i>un</i> zip	the opposite of zip

I unzip my jacket when I get inside.

<i>un</i> kind	not kind
----------------	----------

Unkind words hurt people's feelings.

This slide shows Prefix UN. When Prefix UN is added to a verb or action word, the new word means the opposite action. Unzip is the opposite action of zip.

Call on an individual student to read the sample sentence.

Prefix UN can also mean "not." Unkind means not kind.

Call on a student to read the sample sentence.



Slide 2: untie, unknown, unclear, unhappy (blank)

Call on individual students to read a word.

Does adding Prefix UN add another syllable? yes

How will we code Prefix UN? a Box around UN

Slide 3: untie, unknown, unclear, unhappy (coded with a Box around UN)

Let's read these words together.

Invite individual students to use a word in a sentence.

Slide 4: (slide introducing Prefix RE)

RE	again
retie	tie again

Jenna had to retie her untied shoe.

Prefix RE means again. It is added to a verb to show that the action is done again. Retie means to tie again.

Call on a student to read the sample sentence.

Slide 5: Words—replace, reread, repay (blank)

Call on individual students to read a word.

Does adding Prefix RE add another syllable? yes

How will we code Prefix RE? a Box around RE

Slide 6: Words—replace, reread, repay (coded with a Box around RE)

Let's read the words together.

Invite individual students to use a word in a sentence.

Slide 7 (slide introducing Prefix MIS)

MIS	wrong
misspell	to spell wrong

Did I misspell the last word?

Prefix MIS can be added to a verb to show that it was the wrong action. Misspell means to spell a word wrong.



ADVANCED LESSON 14

Objectives

- Suffixes: Suffixes ER and EST (adjectives that compare); Suffixes ER and OR (someone or something that . . .)
- Suffix rule review: No Changes Rule, Doubling Rule, Drop Sneaky E Rule, Y to an I Rule
- Secret Code: Box

Materials

- Activity Book pp. XX
- Cheat Sheet: Suffix Rules

Essential Questions

- Which suffix is used to compare two things? Three or more things?
- Which two suffixes are used to form a noun for someone or something that does a certain action?

Daily Video

Slide Presentation Guide

We have practiced suffixes for nouns and verbs. Today, we are practicing two suffixes that are used for adjectives.

Remind the students that an adjective is a word used to describe a noun. Adjectives describe things such as size, color, shape, feel, smell, or sound.

Suffix ER or Suffix EST can be added to an adjective to compare nouns. Suffix ER is used to compare two nouns. Suffix EST is used to compare more than two nouns.

For example, let's say you have a grape, an orange, and a watermelon. The orange is bigger than the grape. The watermelon is the biggest of the three.

All the suffix rules we have learned can be used with these suffixes.

Slide 1: Words—(table)

Base word	Comparing two	Comparing more than two
long	longer	longest
hard	harder	hardest
kind	kinder	kindest

Did the base word change when each of the suffixes was added? no

Does adding Suffix ER or EST add another syllable? yes

Call on individual students to read a row of words.



readingHQ
BECOMING BETTER READERS

ACTIVITY SHEETS

ADVANCED

Name: _____

EXTERNAL: HOW YOU LOOK

INTERNAL: HOW YOU FEEL

EXPRESSIONS

THOUGHTS

WORDS

PHYSICAL TRAITS

FEELINGS

PERSONALITY





ADVANCED LESSON 18 (continued)

EXPOSITION

SETTING

RISING ACTION

Climax

CLIMAX

FALLING ACTION

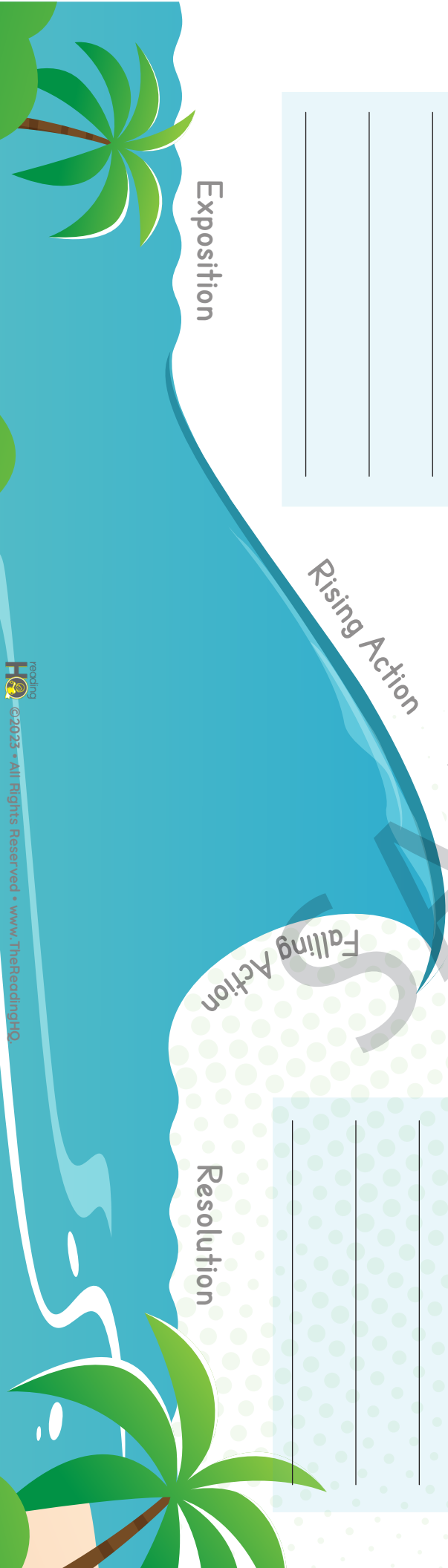
RESOLUTION

Exposition

Rising Action

Falling Action

Resolution





Name: _____

Use the Secret Code Swoosh to mark each Bossy R group.

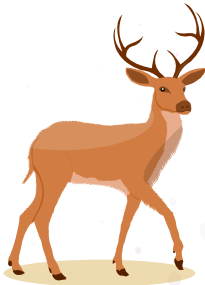
fern sport turn girl bark torn

Circle the word that matches the picture.



1. hair

hear



2. dare

deer



3. square

squirt



4. ear

air

Read each sentence. Circle each Bossy R word.

1. Pete rode his horse to the barn.
2. My bedroom is upstairs.
3. The nurse took care of my cut.
4. A deer is standing by Dad's truck!



CHEAT SHEETS, FLASH CARDS, AND DIGITAL PLATFORM

readingHQ
BECOMING BETTER READERS

Cheat Sheet Plot Wave

1. **Exposition:** background information—character and setting
2. **Rising Action:** changes, challenges, and problems arise
3. **Climax:** intense/exciting; point of decision or confrontation (challenges faced, battles fought)
4. **Falling Action:** events leading to solution
5. **Resolution:** solution to problem or challenge

readingHQ
BECOMING BETTER READERS

Secret Codes

˘ Breve	short vowel	bat
— Macron	long vowel	cāke
/ Strike	silent letter	bikē
— Underline	multiple letters making one sound	path
— Cross through	voiced sounds (s, th)	rose
• Dot	unusual consonant sound (c, g, s, y)	cent
•• Two Dots	unusual vowel sound (a, u)	fall
— Swoosh	combination (wh, qu, Bossy R)	whale
[Bracket	final, stable syllable	bugle
Slash	division of syllables	catfish
◌ Schwa	unstressed/unaccented vowel	ābout
ˊ Accent	stressed/accented syllable	cāncel

© 2020 readingHQ. All rights reserved. www.theReadingHQ.com



Voiced and Unvoiced Sounds

Voiced Sounds (vibrations)

- Voiced Letters – b, d, g, j, l, m, n, r, v, w, z
- All Vowels – a, e, i, o, u, y
- Voiced Letter Groups – dge, ge, zz
- Final Stable Syllables – ble, cle, dle, fle, gle, kle, ple, tle, zle

Unvoiced Sounds (no vibrations)

- k, p, s, t
- ch, ck, ph,

readingHQ

Bossy R

The Originals

ar
er
er, ir, ur

The Unusals

air
are
eer
ear
ear
our

art, charm, star
ornery, port, for
herd, bigger

bird, fir

nurse, fur

readingHQ

Vowel y

end of one syllable word
end of multiple syllable word
in the middle or at the end of syllable
in the middle or at the end of syllable

mý, spý
any, mercý
bicycle, mýth
pýthon, týphoon

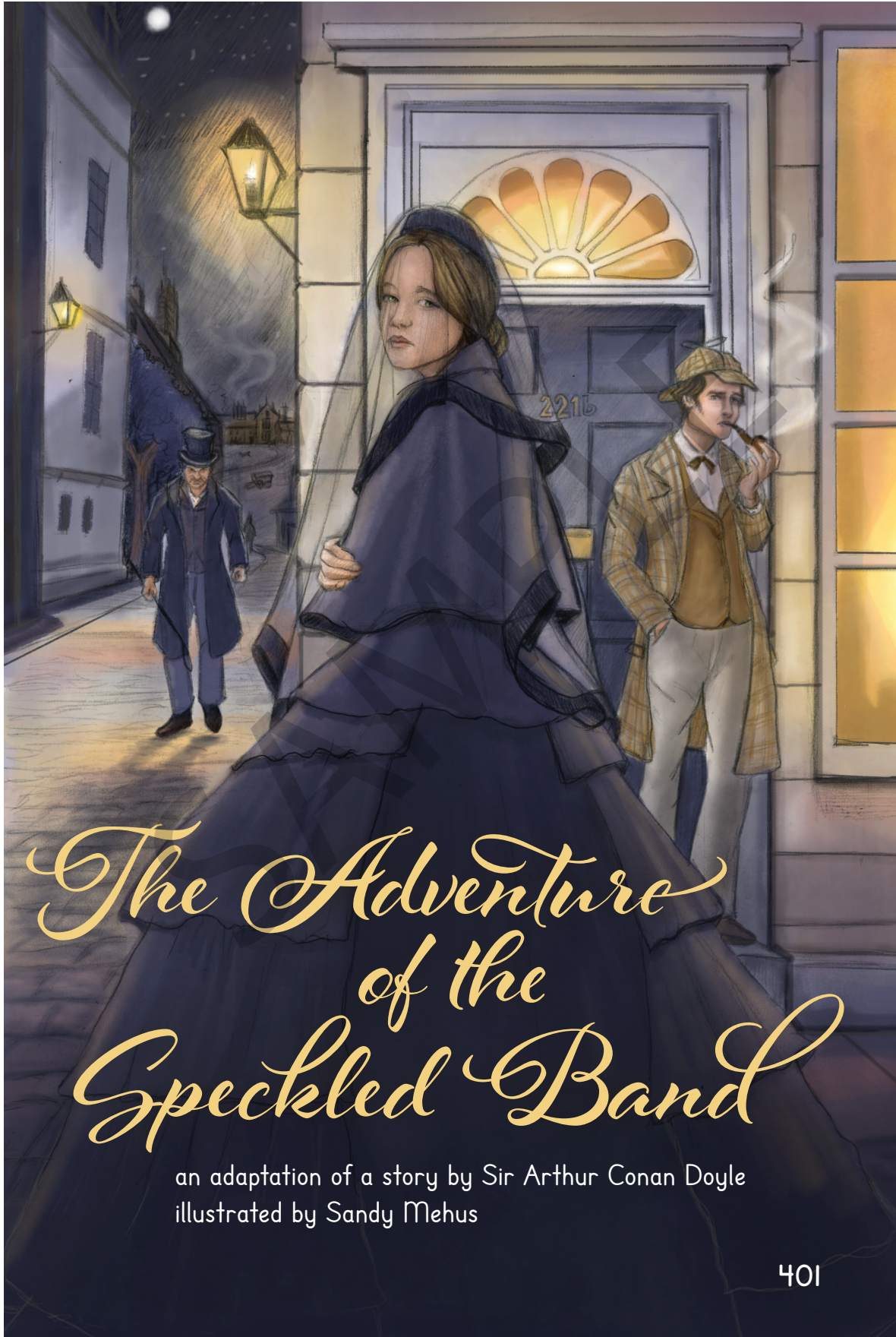
readingHQ



readingHQ
BECOMING BETTER READERS

STUDENT READER





The Adventure of the Speckled Band

an adaptation of a story by Sir Arthur Conan Doyle
illustrated by Sandy Mehus

TWO BROTHERS & MANY WINGS

by Eileen Berry



Wilbur and Orville Wright lived in Dayton, Ohio. Like most brothers, they played, worked, and argued together. They complimented each other as Wilbur was quiet and thoughtful and Orville was confident and creative. They made a good team!

They liked to see how things worked so they took things apart and put them back together again. Sometimes they tried experiments. During these experiments, they asked each other questions and looked for answers.

When the brothers grew up, they opened a bicycle shop where they made bicycles and fixed broken ones. They continued asking questions. If people could ride like the wind on a bike, could people use a machine to fly?



At the site of the donkeys loaded with their treasure, the thieves burst into the cave with sabors drawn. They discovered Cassim, attempting to hide behind the rest of the treasure and promptly killed him. Worried that Cassim might not be the only person to have discovered their secret, they decided to use him to issue a warning to anyone else who might want to steal their treasure. The thieves dragged Cassim's body out of the cave, closed everything up tight, and left him there at the door in the rock wall.

Meanwhile, back at home, Cassim's wife was growing more and more worried when Cassim had not returned

LIKE WHAT YOU SEE?



SCAN CODE FOR MORE INFORMATION!

Instructor Bundle—\$99.99

Student Bundle—\$79.99

Success Guarantee

We know that sometimes it can be difficult to determine where a student should begin. Depending on their current skill level, they may require one or the other grade level or a combination of the two. If you find that your child isn't quite a

match for the purchased level, we will give you access to the next closest level, whether that is down or up. We also are constantly adding additional practice activities to the digital platform to provide you and your little readers with the best opportunity for practice and success.



reading**HQ**